



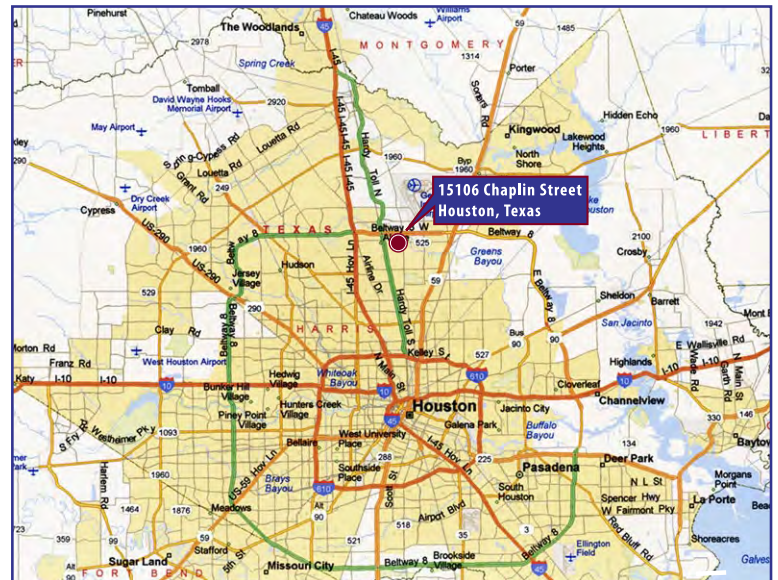
±6,000 SF Freestanding Office/Warehouse Bldg.

PROJECT FEATURES

- Total Size: ±6,000 SF Total
- Warehouse: 3,500 SF
- Office: 2,500 SF
- Land: ±27,568 SF
- Freestanding Office/Warehouse Facility
- Mezzanine Storage
- 24' Clear Height
- (1) 14'x16' Ramp
- (1) 14'x16' Semi-Dock
- (1) 14'x16' Dock-Well
- Outside Paved Storage Area
- Fully Fenced
- Built in 2012
- Located in Harris County
- Call for Pricing

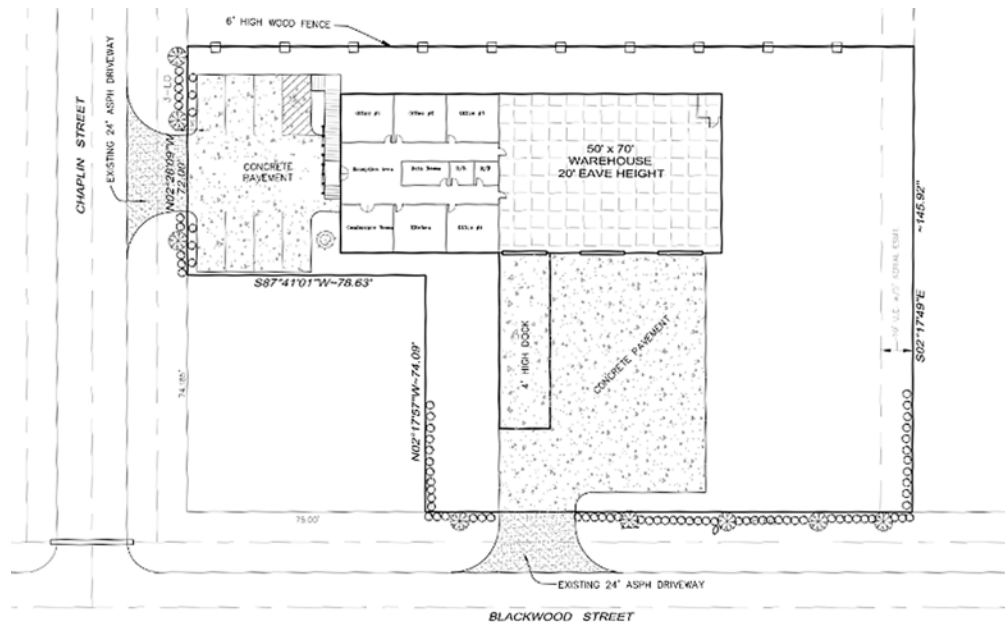
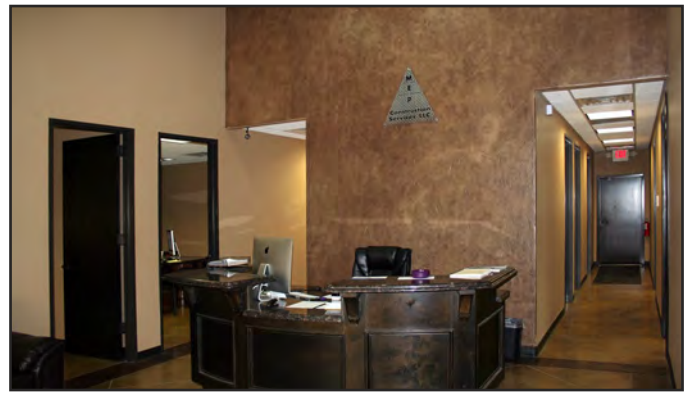
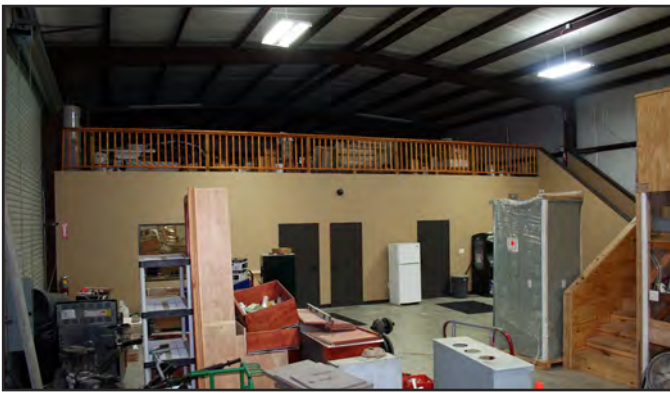
Located ½ mile east of Hardy Toll Road, just south of the North Belt. The Property benefits from exceptional access to BW8, I-45, Hwy 249, I-69/US 59, Hwy 290, I-10, Grand Parkway and George Bush Inter. Airport.

15106 Chaplin St. - Houston, TX 77032



Lane F. Guinn, SIOR
Phone: 713.784.7770 • Mobile: 832.865.3044
lguinn@jlm-commercial.com
www.jlm-commercial.com

Mary Jo Giammalva
Phone: 713.784.7774 • Mobile: 713.805.4728
maryjogb@jlm-commercial.com



Lane F. Guinn
 Phone: 713.784.7770
 Mobile: 832.865.3044
 lguinn@jlm-commercial.com

Mary Jo Giammalva
 Phone: 713.784.7774 • Mobile: 713.805.4728
 maryjogb@jlm-commercial.com