



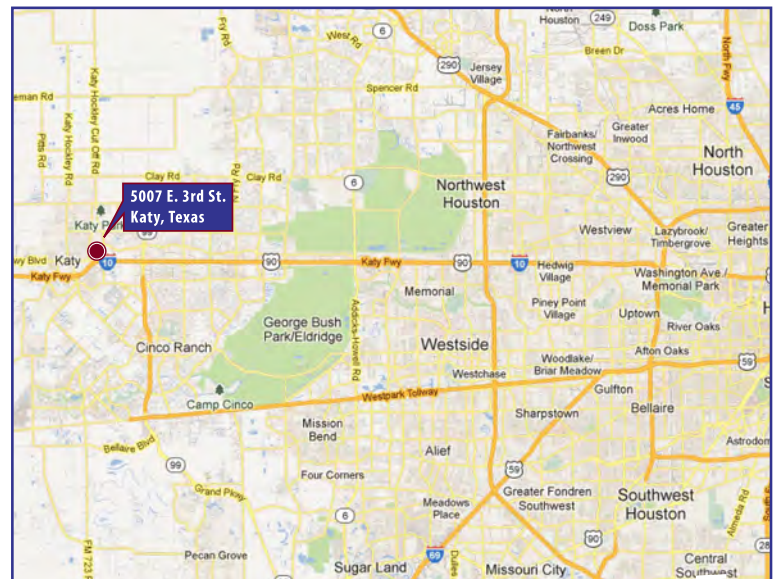
±10,000-36,818 SF Office/Warehouse/Shop Facility

PROJECT FEATURES

- Total Size: ±10,000-36,818 SF Total
- Office: ±6,384 SF Total (3-Floors)
 - 1st Level: ±2,128 SF
 - 2nd Level: ±2,128 SF
 - 3rd Level: ±2,128 SF
- Warehouse: ±30,434 SF
- Land: ±2.327 Acres
- Clear Height: 16'-30'
- Three (3) Grade Level Doors
- Gated Truck Court / Laydown Yard
- Stabilized Outside Storage Area
- Located in Harris County
- Metal Construction
- Located at the SW Corner of 3rd Street and Katy Fort Bend Road in the West Houston Market
- Call for Pricing

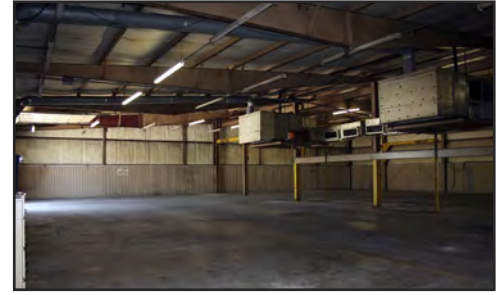
Located in the Far West Houston/Katy Area w/ Excellent Visibility from I-10 with Great Access to I-10, Grand Parkway, Beltway 8 and Houston's Major Thoroughfares

5007 E. 3rd St. - Katy, TX 77493

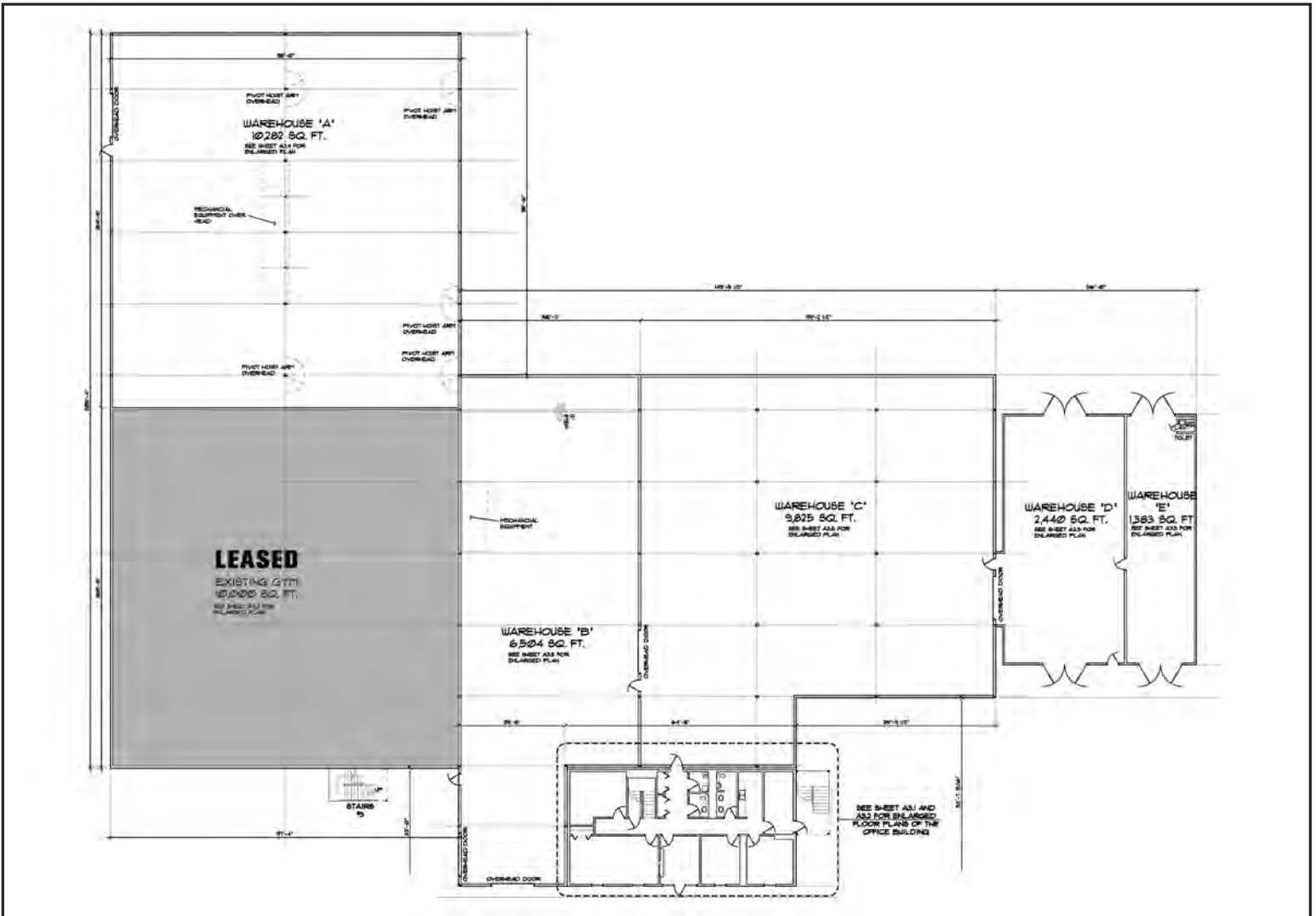


Mary Jo Giammalva - Sr. VP
Phone: 713.784.7774 • Mobile: 713.805.4728
maryjogb@jlm-commercial.com

Lane F. Guinn - President
Phone: 713.784.7770 • Mobile: 832.865.3044
lguinn@jlm-commercial.com
www.jlm-commercial.com



Floor Plan



Mary Jo Giammalva
 Phone: 713.784.7774
 Mobile: 713.805.4728
 maryjogb@jlm-commercial.com

Lane F. Guinn
 Phone: 713.784.7770
 Mobile: 832.865.3044
 lguinn@jlm-commercial.com